



EVacademy



**MUCH
MORE**

THAN AN ENGLISH SCHOOL
...

INDEX

INTRO

Why the Philippines	... 2
About us	... 3

STUDY

English education	... 5
Course summary	... 6
ESL	... 7
IELTS	... 8
TOEIC	... 9
TOEFL	... 9
Nursing	... 10
Business English	... 10
ELCA	... 10
Junior programs	... 11

FACILITIES


The campus	... 12
The Academy	... 13
Students residences	... 15
Recreational	... 17



WE LOVE HIGH STANDARDS

We know what you think: this looks too good to be an English school. Well ... it is.

EV ACADEMY is the first of its kind: a new generation of English institutes abroad delivering the highest standards in terms of both education & facilities. Read more and make your own opinion ...



Why learn English in Cebu, Philippines?

The tropical island of Cebu is located in the middle of the Philippine archipelago, in South East Asia, just a few hours away from most Asian capital cities. Since the early 2000s, Cebu has been welcoming students of all ages and nationalities, and has grown as a top destination for learning English. Here are a few reasons why:

English culture

The Philippines is the 5th largest English-speaking country in the world and English is one of its two national languages.

Get more for less

Education, tourism, daily expenses... The Philippines offers you more for less! A full English course in Cebu will cost up to 50% less than a similar programme in another English speaking country.

Study made easy!

For most foreign students, no tourist nor student visa is needed prior to entering the country: get your plane ticket, come to Cebu and EV ACADEMY will take care of the rest on the spot!

The "Filipino touch"

No wonder why the Philippines is commonly described as "the smile of Asia"! The natural sense of hospitality and patience of the Filipino people will surely make your learning experience comfortable and productive.

Study & Holiday

Cebu is a tropical paradise. Either you enjoy the white sand beaches, the breathtaking beauty of the underwater world, the frenzy of the giant shopping malls, Cebu has everything to make your stay unforgettable by combining English studies and discovery travels you won't find anywhere else.

Full package

For your convenience, most English schools in Cebu offer full packages combining daily classes, lodging, catering and selective activities, therefore saving you time and energy.

ABOUT US

In short, EV Academy has been a pioneering English learning institute in the Philippines since 2002 and the first in Cebu to develop "Intensive English Programs" (or IEP), a concept that has become a trademark nationwide.

In 2009, we took a historical step forward by opening the largest ESL school nationwide and by launching the concept of "school & resort". With the opening of our new campus last October 2017, we became a top option combining outstanding facilities, effective English education and a well rounded customer service.

We love what we do and we constantly set up new goals in order to offer you the best!



TAKE YOUR ENGLISH LEARNING EXPERIENCE TO A WHOLE NEW LEVEL ...

Establishment : 2004

Management : China, France, Japan, Philippines, South Korea, Taiwan, Vietnam

Address : Governor Cuenco Avenue, Nasipit, Talamban, Cebu City 6000 (Philippines)

Phone number : (+63) 32.384.4755

Website : www.evenglish.com

Email : ev-global@hanmail.net

Capacity : Up to 300 students

we are on



Family Park



University of San Carlos

Thai Boran Massage

Toppoki Man

Calda pizza

Barbeque Boss

Woodridge

Bollywood

Gaisano mall

Aicila Suites hotel

convenience store

pharmacy

Cafe Egao



Biano's pizza

KFC

Santo Nino Village

Jollibee

Gullias hospital

University of the Visayas

Spicy

BTC mall

University of Cebu



COACHING EXPERTS

When you study abroad, maintaining a high level of motivation can be challenging... At EV, we became experts in the art of coaching by creating a structure and system that help you go all the way and stick to your plan and target.



WE ARE LEGIT

Since 2014, EV ACADEMY is recognized by the DOT (Department of Tourism) as one of the top English academies nationwide and selected to represent the Philippines in education fairs abroad (China, Russia, Taiwan, Thailand, etc). We are TESDA accredited and an active member of CALA (Cebu Association of Language Academies). EV is the only TESOL accredited institute in Cebu and works in close partnership with TESLA.



SUCCESS BREEDS SUCCESS

At EV, we have a preference for people who know what they want. As a business team, we started this adventure small... And after 15 years, we have helped over 15,000 students built their success story. So jump in and surf the wave with us!



100% OF OUR JUNIOR GROUP CUSTOMERS RETURN EVERY YEAR

15,000
students since 2002

students from
18 COUNTRIES

DAILY PRIVATE LESSONS

Enjoy 4, 6,... up to 8
One to One classes daily!!!
(1 teacher / 1 student)



HOLISTIC EDUCATION

learning experience as a whole. find the right balance between effort and relaxation we pay attention to the details. We consider your learning style, interaction with classmates...



TOO COOL FOR A SCHOOL

So you are planning to spend a few days, weeks or months abroad for your English studies?... If you are looking for a school with a solid academic reputation, a cool artistic inspired design & a unique resort feeling, come in and knock at the door ...

ENGLISH EDUCATION

A brief description of EV ACADEMY educational system & common core ...

CHOOSE YOUR STUDY PLAN

What is a Study Plan (or SP)?

It is a set of conditions that comes with each English course and regulates your daily schedule. EV ACADEMY offers 2 different Study Plans named SP1 & SP2:



SP1 is designed for students who have a clear goal in mind and a real ambition:
I GO INTENSIVE

Vocabulary & sentence test available daily to monitor your progress (2x 15 min) + mandatory self study

Curfew: Mon – Thu : **strict**
Friday : 17:00 to 00:00
Saturday : 05:00 to 00:00
Sunday : 05:00 to 22:00

Daily tests are not available

Curfew: Mon - Thu : 17:00 to 22:00
Friday : 17:00 to 00:00
Saturday : 05:00 to 00:00
Sunday : 05:00 to 22:00



SP2 is designed for students who want to learn English and enjoy Cebu :
I GO SEMI INTENSIVE

DAILY SCHEDULE

6:00 - 6:30	wake up call	Applies to SP1
06:40 - 07:30	optional classes	Applies to SP2
07:00 - 08:00	Breakfast ☺ / vocabulary test (15 min)	Applies to SP1
8:00 - 11:55	morning classes	Applies to SP1
12:00 - 13:00	Lunch ☺	Applies to SP1
13:00 - 17:00	afternoon classes	Applies to SP1
17:00 - 18:00	free time or optional classes (Yoga/Zumba)	Applies to SP2
18:00 - 19:00	dinner ☺ / activity (30 min x2)	Applies to SP1
19:00 - 20:00	sentence test	Applies to SP1
20:00 - 22:00	self study	Applies to SP1
22:00+	enjoy 🍷 🎧 🕺 🏊 🌴	Applies to SP2

Optional classes are FREE and open to everyone. Pick your favorite among Fluency Class, Debate Class, Grammar Guide, Film study, Speaking workshop, Writing workshop & CNN. It's subject to number of students or condition.

- Applies to SP1
- Applies to SP2

COMMON CORE

8 Classes daily

All our English programs include 8 classes daily (excluding extra curricular classes) with a minimum of 4 "One to One" sessions (1 teacher / 1 student), either you enrol for an intensive or semi intensive course.

55 minutes classes

This time structure (55 minutes class + 5 minutes break = 1h) allows us to offer a neat schedule and class start (8am / 9am / 10am...): we stick to it.

Class setting

Aside from private lessons, you will enjoy small group classes (up to 6 students) & large group classes (up to 9 students).

Note: we limit the size of our classes in order to maximize interactions.

Extra curricular

You can avail optional classes every morning and evening as well as "activity" classes. Weekend classes are available too.

"Fun Friday"

Once a month, while your teachers undergo their training workshop, we offer you "Optional" classes.

CERTIFICATION



At the end of your course, you receive a certificate of completion showing your score (or your English proficiency level), the number of hours you have completed and your attendance rate.

CHOOSE YOUR COURSE

Here is a summary of all English courses offered at EV ACADEMY

Field	Course	Study Plan	Description	Structure
ESL general English	Intensive ESL	SP1 	A focused ESL course combined with daily tests and self study modules in order to optimize your learnings	4 MTM / 2 SG / 2 LG
	ESL classic	SP2 	Foundation course covering the full spectrum of language skills along with classes focused on grammar and pronunciation	4 MTM / 2 SG / 2 LG
	MTM extended	SP2 	ESL classic course upgraded with additional private lessons	6 MTM / 1 SG / 1 LG
	All MTM	SP2 	ESL competencies development through full private tutorial. This formula offers more room for customized learning	8 MTM
	Power speaking	SP1 	General ESL course with a full focus on oral expression and effective communication	6 MTM / 1 SG / 1 LG
ACADEMIC ENGLISH exam preparation	Intensive IELTS (basic: Pre-IELTS)	SP2 	Preparatory program for both GENERAL and ACADEMIC IELTS. At a basic level, students enter first the PRE-IELTS: a mixed ESL/IELTS course	4 MTM / 2 SG / 2 LG
	IELTS guarantee	SP1 	We guarantee your IELTS target score!	4 MTM / 2 SG / 2 LG
	TOEIC	SP2 	A course that focuses and communication skills, exam strategies and mock tests to reach the highest TOEIC score possible	4 MTM / 2 SG / 2 LG
	TOEFL	SP2 	A preparatory program that covers essential areas while providing key strategies for success on the TOEFL test	4 MTM / 2 SG / 2 LG
ESP English for Specific Purposes	Business English	SP2 	All you need to boost your oral expression and business negotiation skills within a short period of time	4 MTM / 2 SG / 2 LG
	Nursing	SP2 	A course designed for the healthcare sector to improve your confidence, language skills, communication skills in your specific field (SOON TO OPEN)	4 MTM / 2 SG / 2 LG
	ELCA	SP2 	English Learning and Culture Awareness: a fun program combining English classes, thematic lectures and deep interaction between students	customizable
YOUNG LEARNERS	Junior camp Family camp	SP2 	Learn English, make new friends and explore the Philippines in a safe environment: a fun-filled experience you will never forget!	customizable

Legend: MTM = Man to Man | SG = Small Group class | LG = Large Group class

YOUR TEACHERS

For the past 16 years, EV has become a leader in selecting, training and maintaining quality teachers. All of them work full-time and have been selected for their abilities to handle English teaching in a culturally-diverse workplace.

Our teachers' training is a TESOL CERTIFIED PROGRAM accredited by the International Tesol Accreditation Authority (ITAA): this is how we guarantee international teaching standards.





ESL | Your passport to a global English-speaking environment

INTENSIVE & ESL CLASSIC (SP1 / SP2)		MTM EXTENDED (SP2)		ALL MTM (SP2)		POWER SPEAKING (SP2)	
MTM1	Reading	MTM1	Reading	MTM1	Reading	MTM1	Fluent Speaking
MTM2	Writing	MTM2	Writing	MTM2	Writing	MTM2	Conversational English
MTM3	Speaking	MTM3	Speaking	MTM3	Speaking	MTM3	The Lexicon
MTM4	Listening	MTM4	Listening	MTM4	Listening	MTM4	Effective Communication
SG1	Grammar	MTM5	Conversational English	MTM5	The Lexicon	MTM5	Current Issues
SG2	Presentation	MTM6	The Lexicon	MTM6	Grammar	MTM6	Dynamic Reading
LG1	Active Speaking	SG1	Grammar or Presentation	MTM7	Dynamic Reading	SG1	Presentation
LG2	CNN / Listening	LG1	Active Speaking or CNN / Listening	MTM8	Creative Writing	LG1	Active Speaking

Legend : MTM = Man to Man | SG = Small Group class | LG = Large Group class

Note : ESL INTENSIVE is similar to ESL Classic upgraded with daily tests and self study modules in order to optimize your learnings



PURPOSE

ESL are foundation courses covering the full spectrum of language skills along with classes focused on grammar and pronunciation.

Whether you want to improve your English for personal or professional reasons, these programs aim to help you improve your English skills quickly and efficiently.

Each course answers specific needs: for example, Power Speaking offers a 100% focus on oral expression ... while the main concept behind All MTM is to offer you a fully personalized learning through private sessions.

DESCRIPTION

Our ESL courses focus primarily on providing instruction in English vocabulary, grammar, pronunciation, and usage. Our classes cover the full spectrum of language skills (Speaking, Listening, Reading and Writing) through a communicative approach (CLT). They are taught by experienced teachers who emphasize both fluency and accuracy in their classes.

Curriculums vary from basic to advanced and often focus on a particular track such as travel, academic, social, technical, or otherwise specialized English. Tracks are customized within the MTM classes.

For more information about our ESL courses, please visit us at www.evenglish.com



IELTS | Your passport to post-graduate studies abroad

Course	Mock Test	Target score	Entrance level	Daily structure	
Pre-IELTS (SP2) (Academic & General)	Every thursday	-	2.0	Man to Man ESL : 55 min x 4	Group class ESL : 55 min x 4
IELTS Intensive (SP2) (Academic & General)	Every Thursday	-	4.0	Man to Man ESL : 55 min x 4	Group class IELTS : 55 min x 4
IELTS GUARANTEE (SP1) (Academic & Academic)	Every Thursday	5.5	IELTS 4.0	Man to Man ESL : 55 min x 4	Group class IELTS : 55 min x 4
		6.0	IELTS 5.0		
		6.5	IELTS 6.0		

Our **IELTS GUARANTEE PROGRAM** is a 12-week course upon which we guarantee your target score or we offer free classes until full success (other fees remain at the student's expenses).

Course Description

The program offers a comprehensive introduction to the IELTS test, with a wide selection of interactive practice materials. Contents are organized into four main skill areas: Speaking, Listening, Reading and Writing with the addition of IELTS Grammar in Group Class. Each Section of this course includes engaging in multi-media presentations and in-depth discussions reviewing key test taking skills, strategies and techniques. It aims to equip the students with the skills and strategies needed to take the IELTS Test with confidence to maximize their score.

Digitized Instructional Materials & References

EV Academic IELTS Guarantee Program boasts in-house instructional material selection available both on paperbacks and digital copy. All learning Materials are carefully studied, compiled and prepared by a dynamic Research and Development Team.

Evaluation & feedback

Weekly, you are required to take a simulation test. Monthly, another test is given that culminates all the learnings delivered in the month. Each test is followed by a **PROGRESS REPORT** to keep track to all your scores, and each student has his/her own line graph that shows weekly and monthly performance. At the end of the month, the entire IELTS department (Head, Teachers and Students) will have a conference regarding the progress report of the students. Issues, schedules, and course delivery approach will be addressed in this meeting. This aims to assess your weaknesses and target your learning on the following week.

07:00 - 08:00	IELTS Vocabulary Class & Test
08:00 - 08:55	MTM Class (Writing)
09:00 - 09:55	MTM Class (Speaking)
10:00 - 10:55	MTM Class (Reading)
11:00 - 11:55	MTM Class (Listening)
13:00 - 13:55	Group Class (Writing)
14:00 - 14:55	Group Class (Speaking)
15:00 - 15:55	Group Class (IELTS Grammar)
16:00 - 16:55	Group Class (Listening & Reading)
17:00 - 18:00	Optional Class (General English)
19:00 - 20:00	IELTS Night Activity
20:00 - 21:00	Self Study for IELTS (Homework)



TAKE YOUR OFFICIAL IDP IELTS AT EV ACADEMY

For your convenience, we host IDP IELTS official tests 3 times monthly.



**IN 2017, EV ACADEMY
RECORDED 100% SUCCESS ON
ITS IELTS GUARANTEE COURSE**

ACADEMIC ENGLISH (exam preparation courses)

TOEIC

MTM 1	TOEIC Reading & Vocabulary	
MTM 2	TOEIC Reading & Vocabulary	
MTM 3	TOEIC listening	
MTM 4	TOEIC listening	
SG 1	Integrated Grammar	
SG 2	TOEIC reading (part 5&6)	(ESL) Depends on the level
LG 1	TOEIC reading (part 7)	
LG 2	TOEIC business English	

PURPOSE

The TOEIC is a Global Standard for Assessing English Proficiency for business and academic institutions. Today, TOEIC test scores are used by over 10,000 companies, government agencies and English Language Learning programs in 120 countries. It is often required by companies for employment, promotion and more.

DESCRIPTION

Our TOEIC course is designed for university students and business individuals who need to get a substantial improvement in TOEIC test within a short period of time and easily advance both study or career. The objective is to develop communication skills and learn test preparation techniques through intensive training to guarantee the highest TOEIC score possible.

To help you monitor your progress, this course integrates a WEEKLY TOEIC MOCK TEST.

Note: Upon request, EV ACADEMY can arrange your official TOEIC test registration in Cebu.

~~~~~

#### Lawrence (Japan)

"In TOEIC course, we practice TOEIC speaking day after day [...] I can't study hard by myself, so this system really helps me [...] EV provides Mock TOEIC every Friday. I took it every week: it was a great motivation to study more week after week".



## TOEFL

|       |                      |       |
|-------|----------------------|-------|
|       | TOEFL Reading        | MTM 1 |
|       | TOEFL Writing        | MTM 2 |
|       | TOEFL Listening      | MTM 3 |
|       | TOEFL Speaking       | MTM 4 |
| (ESL) | Integrated Grammar   | SG 1  |
|       | Presentation         | SG 2  |
|       | Listening            | LG 1  |
|       | Active Communication | LG 2  |

### PURPOSE

This pathway is a preparation for the TOEFL examination.

Purposes for taking up TOEFL :

- Candidates planning to study at a higher education institution
- English-language learning program admissions and exit
- Scholarship and certification candidates
- Students and workers applying for visas

### DESCRIPTION

Our TOEFL test preparation solution is offered as an intensive program and covers the four essential areas of Reading, Listening, Speaking and Writing while providing key strategies for success on the TOEFL test.

Private sessions (MTM) are designed to be flexible and target specific needs & weaknesses. Group classes will help build your English foundations through ESL learning.

For more information about our exam preparation courses, please visit us at [www.evenglish.com](http://www.evenglish.com)

~~~~~

Eiko (Japan)

"Here I got the right knowledge about TOEFL and useful strategies for solving the questions. EV offers many MTM classes, so I can just concentrate on studying. We can also practice Mock test because they have PC for iBT".



ESP (English for Specific Purposes)

English for Specific Purposes (ESP) is designed to meet specific, individual and/or professional needs. These courses concentrate more on language in context than simply grammar and language structures. The main point is that English is not taught as a subject separated from the real world. Instead, it is integrated into a subject matter important to the learners.

Note: ESP students are usually adults who are learning English in order to gain a set of communication skills needed to perform particular job-related functions.

- For individual enrollment: We offer you a mixed program where all group classes are ESL and your One to One sessions are for the area of specialty you have selected.
- For groups (at least 4 students): This course usually starts with a General Needs Assessment (usually in collaboration with your education overseas agent) and offers 4 to 8 specialized classes daily (non specialized lessons are defined as "general English"). The framework remains identical for any program but the lexis, discourse and genre will be specific to the particular industry selected.

BUSINESS ENGLISH

- MTM 1 - Business vocabulary
- MTM 2 - Business Writing
- MTM 3 - Business Communication
- MTM 4 - Business Negotiations (ESL)
- SG 1 - Integrated Grammar (ESL)
- SG 2 - Presentation
- LG 1 - Business English
- LG 2 - Active Communication (ESL)

This course offers a particular focus on oral competencies. It is designed for businessmen and businesswomen willing to boost their communication skills within 1 to 4 weeks.



NURSING (SOON TO OPEN)

This is a specialized course for students who want to improve their English proficiency in the field of Nursing. Private sessions are held by Nursing graduates who have passed the board exam.

The main focus of our course is the language of basic hospital tasks, as well as the various responsibilities that nurses will take on in their field of work. Teachers will provide ample opportunity for students to practice their spoken expression, as well as simulate real day to day hospital situations such as describing parts of the body, welcoming a patient on admission, filling out forms, etc.

ENGLISH LANGUAGE & CULTURAL AWARENESS PROGRAM

ELCA is a 2-week course that teaches intercultural theories and explores the ways people from different cultures communicate with each other.

You will attend English classes in the morning (ESL), lectures and guided group discussions every afternoon. Under certain conditions, selective lectures will be held by Professors from the University of the Philippines (UP). They will cover topics such as art, history, economy, work or education, giving you an insight on life in the Philippines. These topics are meant to give context to and highlight the intercultural theory of the day, raise awareness, overcome the differences between cultures and to promote smooth communication between world citizen. Students will later apply these intercultural theories through outings, open sharing and group discussions with students from the University of the Philippines.

We've aligned this course with the ASEAN values of unity, international cooperation and active collaboration. We want to shape students into open-minded individuals who can navigate through interactions and social exchanges with people from other countries. A plus is that they become better equipped at adapting to life and work in a multicultural community. In other words, ELCA will teach you much more than just how to talk to people from other countries: it will help you rethink how you see your culture and the different parts of it that have shaped who you are.

ART

HISTORY

ECONOMY

WORK &
EDUCATION

RELIGION
& BELIEFS

FOOD

POLITICS &
ECONOMY

TOURISM

JUNIOR PROGRAMS

Learn, play & explore with EVacademy



Learn English
& build self
confidence



Make friends &
join fun activities



Discover the
Philippines &
a new culture

ABOUT OUR JUNIOR CAMPS

Experience with us the adventure of a lifetime by combining English classes and supervised activities, while exploring a new country through travel & excursions: a fun-filled experience you will never forget!

A TAILORED LEARNING EXPERIENCE

As we work with young learners from different nationalities, with different culture & objectives, we have made our Junior programs fully customizable: education overseas agents are free to add classes & activities in order to build the ideal Junior Camp for their customers.

Note: Student registrations are made exclusively through partner agencies and group booking.

ENGAGING ACTIVITIES

Activities are fun and varied. From pure entertainment to culture awareness, they will also help develop your soft skills such as leadership, teamwork and presentation skills. All activities are supervised by our teachers, in collaboration with your welfare coordinator, in order to guarantee safety and encourage interaction in English.

My weekly schedule sample

	Mon	Tue	Wed	Thu	Fri	Sat	Sun
morning	4 classes	5 classes	4 classes	5 classes	4 classes	day trip to Oslob (whale sharks and Tumalog waterfalls)	day trip to Mactan: Island hopping and Alegre guitar factory
afternoon	Karting + Rain forest adventure park	1 class + on campus activities	fun day at Bluewater Resort	1 class + on campus activities	outreach program		
evening	pool party	Tops (panoramic city view)	zumba	dinner buffet at Harold's hotel	movie time (at EV)	shopping (Ayala mall)	massage (Royal Spa)



GENERAL SPECIFICATIONS

DATE: any time of the year

AGE: from 8 to 17 years old

DURATION: 1 to 6 weeks

BASIS: full board (meals, classes & accommodation included)

LEVEL: Beginner to high inter

LOCATION: on our main campus

Full brochure
available upon request

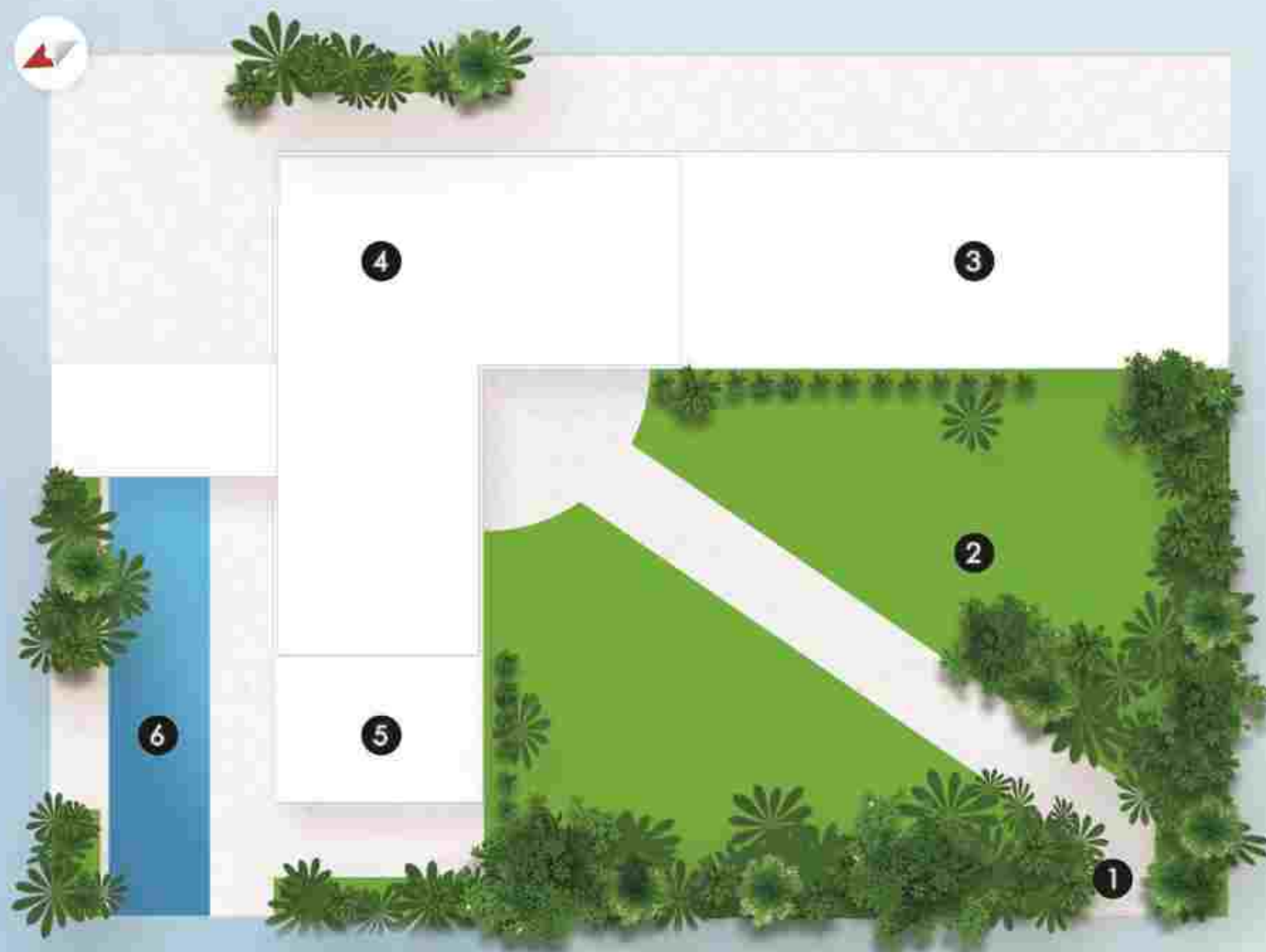
THE CAMPUS

Behind the gate, a dense tropical jungle: a green buffer zone to cut yourself off from the city bustle... As you move forward, the jungle opens on a huge manicured lawn, with a multi-level superstructure standing tall: You are at EV Academy.

The campus covers 5,200 square meters and can be divided into 5 main areas: the garden, the academy, the students' residences, the pool side and the recreational area. All facilities are located within one giant building, allowing you to reach any location from the inside.

The garden has been designed with the expertise of Deena Pajes, one of the best landscapers in the country and the creator of all Shangri-La resorts gardens nationwide.

For your safety, EV Academy new campus has been built above standards: The entire facilities are 8.0 earthquake resistant. In addition, over 60 surveillance cameras (CCTV) are covering every strategic areas and our full time security agents are on the job 24/7 as always.



1. entrance | 2. tropical garden | 3. academy | 4. students residences | 5. recreational area | 6. pool side



THE ACADEMY



What defines an optimized learning environment ?
Simple | Conducive | Comfortable

The Academy aisle covers three floors. It has been specially designed for educational purposes. Corridors are wide to ensure a smooth workflow. There is a large fully-glazed lobby facing the garden and plenty of comfortable nooks to relax between classes.

MTM

1 teacher
1 student

SG

1 teacher
5 students

SG

1 teacher
8 students

- Cubicles (for private lessons)
- Small and Large classrooms
- 1 auditorium (movies, OT, graduation ceremonies...)
- 2 large multifunctional spaces
- 1 library (for silent studies and Mock tests)
- 1 Faculty room
- 3 meeting rooms



175

CUBICLES

for private lessons and
customized learning
(Man to Man)

30

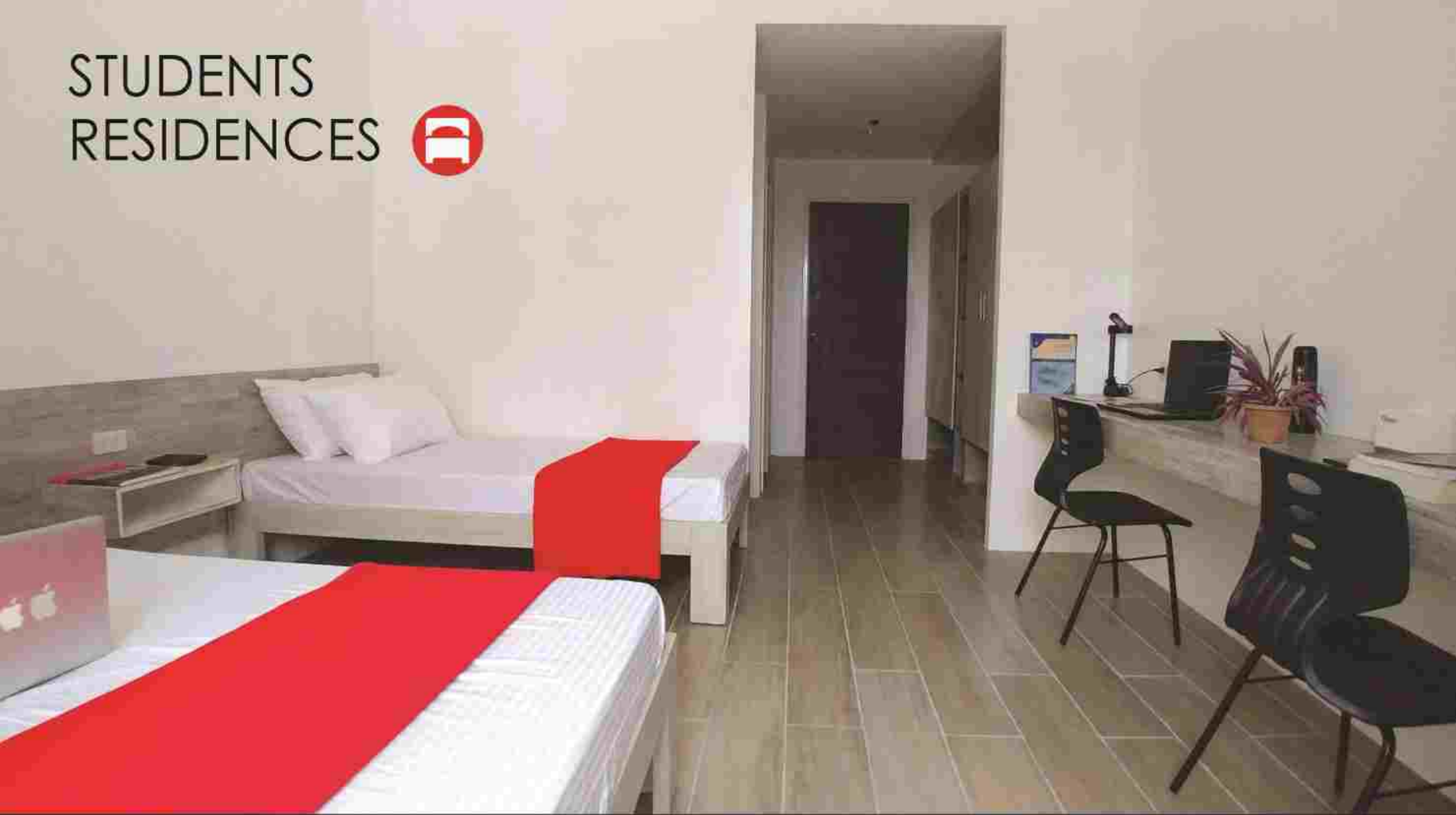
CLASSROOMS

designed for small
groups to facilitate
interactions

380

STUDENTS
CAPACITY

STUDENTS RESIDENCES



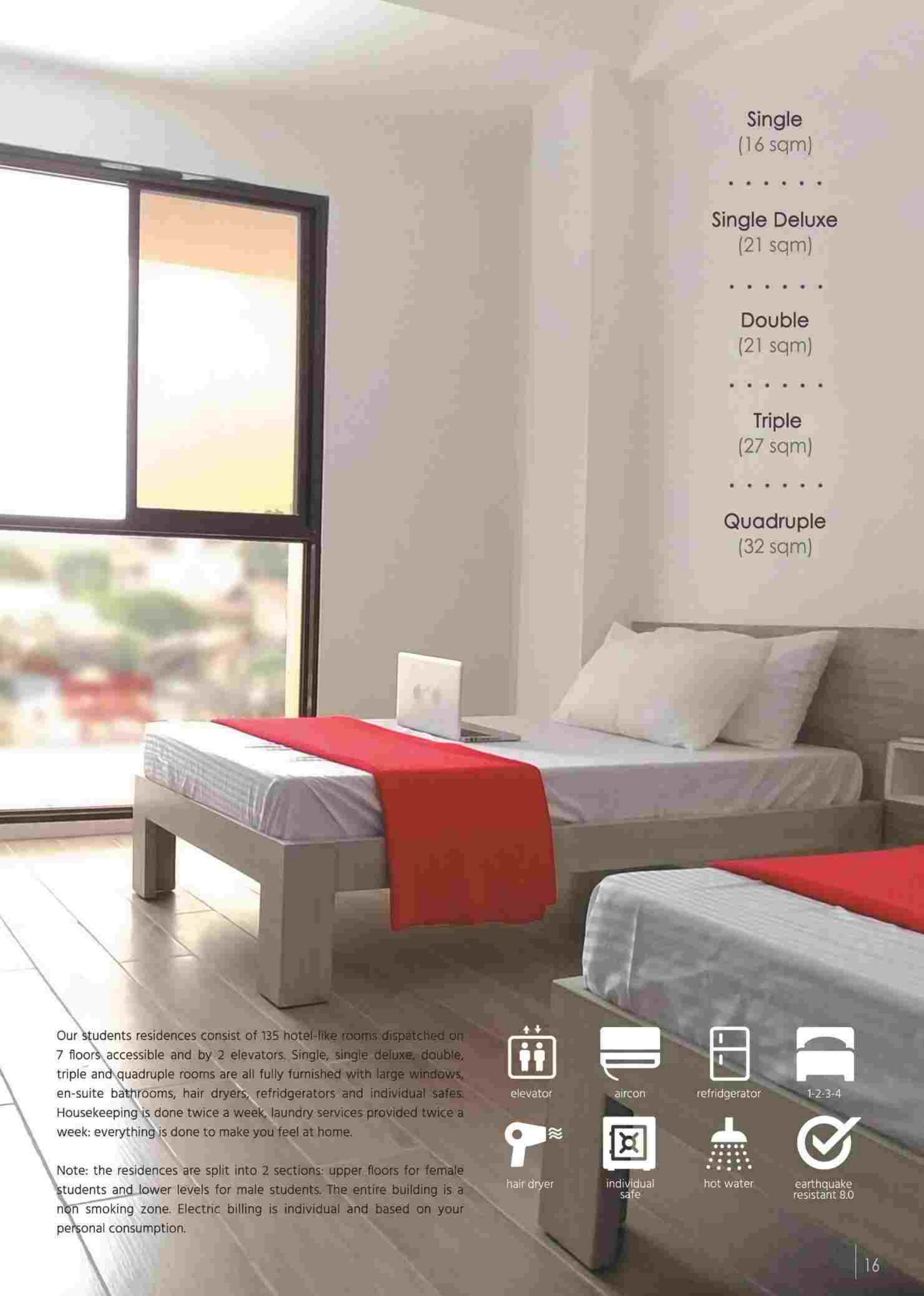
Simplicity & harmony are the key concepts behind the design of our residences

Welcome home ...

We have built for you bright and comfortable rooms that combine neutral tones, wooden tones and modern furniture in order to create functional and welcoming living spaces.

For your convenience and safety, the students residences are located on campus. Off campus lodging options are available upon special request and under specific criteria.





Single
(16 sqm)

.....

Single Deluxe
(21 sqm)

.....

Double
(21 sqm)

.....

Triple
(27 sqm)

.....

Quadruple
(32 sqm)

Our students residences consist of 135 hotel-like rooms dispatched on 7 floors accessible and by 2 elevators. Single, single deluxe, double, triple and quadruple rooms are all fully furnished with large windows, en-suite bathrooms, hair dryers, reffridgerators and individual safes. Housekeeping is done twice a week, laundry services provided twice a week: everything is done to make you feel at home.

Note: the residences are split into 2 sections: upper floors for female students and lower levels for male students. The entire building is a non smoking zone. Electric billing is individual and based on your personal consumption.



elevator



aircon



refridgerator



1-2-3-4



hair dryer



individual
safe



hot water



earthquake
resistant 8.0



Mingling under the canopy ...



A healthy mind in a healthy body

RECREATIONAL

A few more shots to let you “feel the vibe” on campus ...

Access to all facilities is entirely free and exclusive for our students.
Consider this : we offer you much more than a school ... In return you focus in your studies, you reach your goals and make us proud. So do we have a deal?



pool



billiard



gym



yoga



basketball



zumba



ping pong



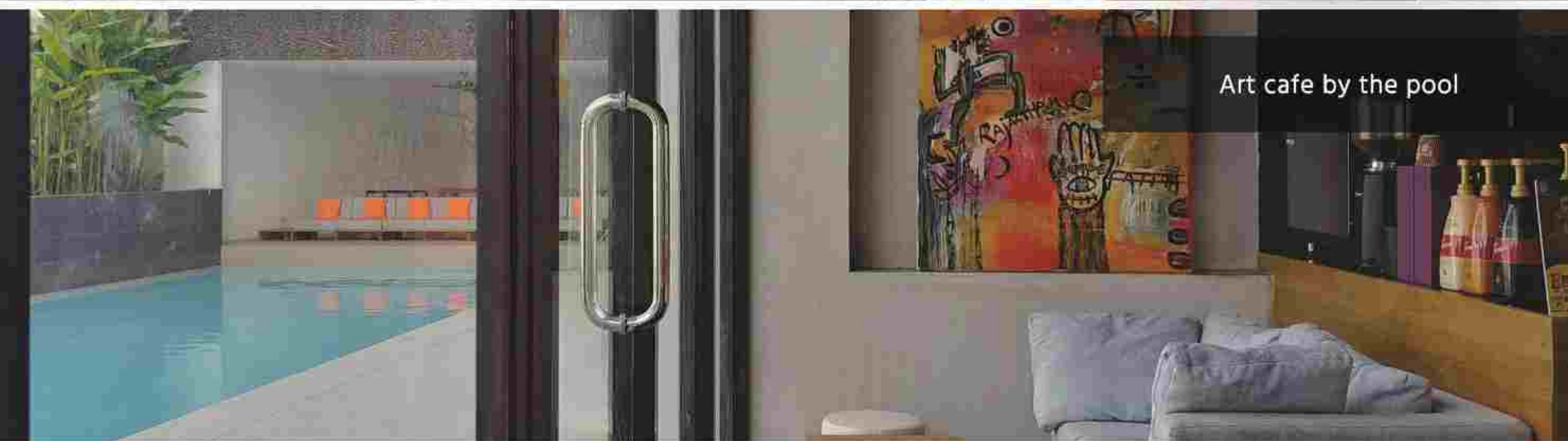
Classy space for silent studies



Funky lobby: the meeting point



The auditorium: chic & comfy



Art cafe by the pool



The open concept : dine in style



Panoramic view : lobby & resto



Chillax: the place to be after class



EVacademy



www.evenglish.com



ev-global@hanmail.net



ev academy

